



88 MAPLE STREET • MILLBURN

WWW.88MAPLESTREET.COM

SARITTE HAREL • CELL: 973-713-9464 • SARITTE@HARELREALESTATE.COM | LISA SALERNO • CELL: 917-533-7358 • LISA@HARELREALESTATE.COM

h | THE
SARITTE HAREL
TEAM
BRINGING PEOPLE HOME

LIFESTYLE & ENTERTAINING

Welcome to this storybook Tudor home nestled in Millburn's desirable Wyoming neighborhood and surrounded by mature trees. Infused with character, this charming 3 bedroom, 2 bathroom home has been meticulously and lovingly maintained.

The gleaming hardwood floors and arched entry leads you to the sun-filled living room complete with walls of oversized windows and a wood burning fireplace. The adjacent sunroom offers a quiet place to sit back and take in the beautiful backyard scenery.

The spacious formal dinning room features a bay window and is connected to the kitchen which is complete with granite countertops, tiled backsplash, center island, and access to the spacious deck and backyard.





Natural light pours into the primary bedroom which features two generous closets. The second floor includes two additional bedrooms both complete with closets and an updated hall bathroom with glass enclosed shower.

The finished lower level features a recreation area and laundry room with access to the oversized garage offering plenty of storage space.

Serenity is easily found in this peaceful backyard. With a canopy of mature trees, the oversized deck and lush surroundings offers the perfect retreat.



HIGHLIGHTS & FLOOR PLAN

AMENITIES & IMPROVEMENTS

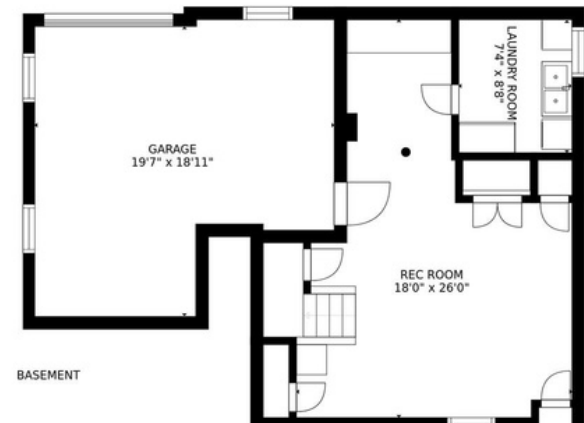
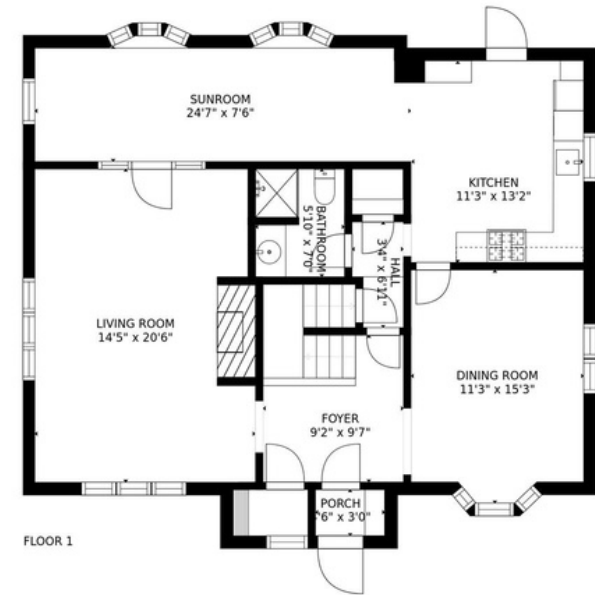
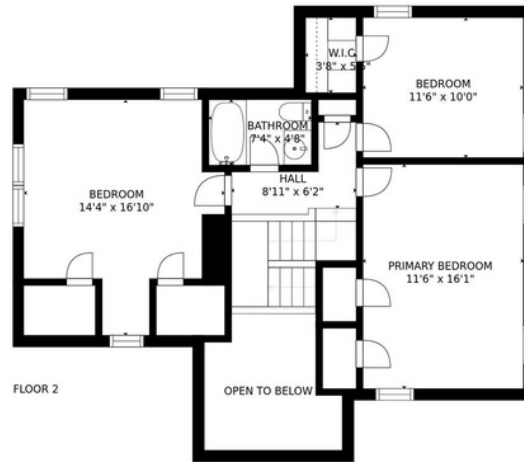
- Gleaming hardwood floors
- Sun-filled living room with wood burning fireplace
- Spacious formal dining room
- Bright and airy sunroom
- Kitchen with granite countertops, tiled backsplash, and center island
- Primary bedroom with two closets
- Two additional generous sized bedrooms complete with closets
- Updated hall bathroom with glass enclosed shower
- Finished lower level with recreation area, and laundry room
- Central AC
- Reverse osmosis water filtration system
- Newer windows throughout
- Pressure pump installed for increased water pressure

EXTERIOR

- Private backyard with mature
- Large deck
- Oversized attached garage
- Freshly painted interior and exterior
- Located close to town, South Mountain Reservation, NYC transportation, schools, shopping and restaurants

PARTICULARS

- Tudor Style
- 3 Bedrooms, 2 full bath
- Built: 1928



SIZES AND DIMENSIONS ARE APPROXIMATE, ACTUAL MAY VARY.

Saritte Harel
Realtor / Associate

Cell: 973-713-9464
saritte@harelrealestate.com



Lisa Salerno
Realtor / Associate

Cell: 917-533-7358
lisa@harelrealestate.com

Ranked Top 1% NJ Realtors • Top 10 NJ Realtors •
NJAR Circle of Excellence Sales Award 2007-2020